

# DMA Parent Guide – Option B (iPads)

Version 2.0

Dated: 02 September 2021

## Table of Contents

<b>Chapter 1: Introduction</b>	<b>3</b>
<b>Chapter 2: Getting Started</b>	<b>4</b>
Unit 2-1 - iPad	4

## Chapter 1: Introduction

This guide is written for parents of students who have their Personal Learning Device (PLD) enrolled into the Device Management Application (DMA) programme under the Ministry of Education (MOE).

It describes the functions that you, as a parent, have access to. The following are the three options that are presented to parents:

### Default Option

This is the selected option, if you do not request for either Option A or B. This option presents you with a dashboard from which you can view your child's/ward's browsing activity.

### Option A

If you wish to have more flexibility with the Personal Learning Device (PLD), you can opt for Option A. This option allows you to install applications and to customise your child's/ward's sleep timing, while retaining the web filtering function, to protect your child/ward from unsafe contents.

### Option B

For parents who wish to have total control of the device after school hours, they can opt for Option B. In addition to having the ability to install applications of choice, all activities on the device are not logged.

It is important to note that by not logging activities, there is no content filtering in place to protect your child from unsafe web content. There is also no sleep hour restriction on the device, which means that the child/ward will be able to use the device at any time.

## Chapter 2: Getting Started

As you have opted for **Option B**, logging of activities is disabled on the device **after school hours**. Unlike other options, there is no access to the parent's dashboard and you **will not** receive an email from the school for setting up a parent's account.

Since the DMA is disabled after school hours, additional functionalities are accessible for iPads and Chromebooks respectively.

### Unit 2-1 - iPad

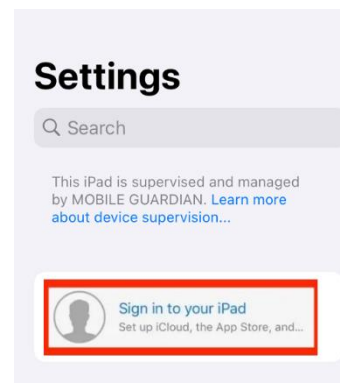
**After school hours**<sup>1</sup>, the following functions are available for **Option B** (No actions are required to be taken by your child/ward to enable this):

1. **Mobile Guardian app is hidden**

The Mobile Guardian app is hidden as a visual indication that DMA is disabled outside of school hours.

2. **You may sign into your personal Apple ID**

You are now able to backup up your documents and media to your personal iCloud account.



3. **Apple App Store is available for the installation of applications**

With this, you are able to install applications for your personal consumption outside of

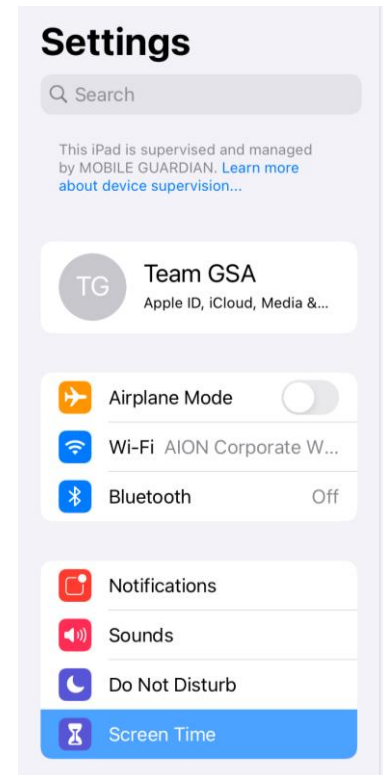
---

<sup>1</sup> When your child's/ward's device exits the **School Hours** mode, please note that it may take up to a minute for the iPad to reflect the changes as the update process requires a connection to the Internet.

school hours.

4. **Apple's Screen Time functionality is now accessible in Settings**

With Screen Time, you can access real-time reports showing how much time you spend on your iPhone, iPad, or iPod touch. You can also set screen time limits for the applications you want to manage.



**If you have any questions, please contact your respective school's DMA Administrator.**